

CERTIFICATE OF LOCATION OF GOVERNMENT CORNER

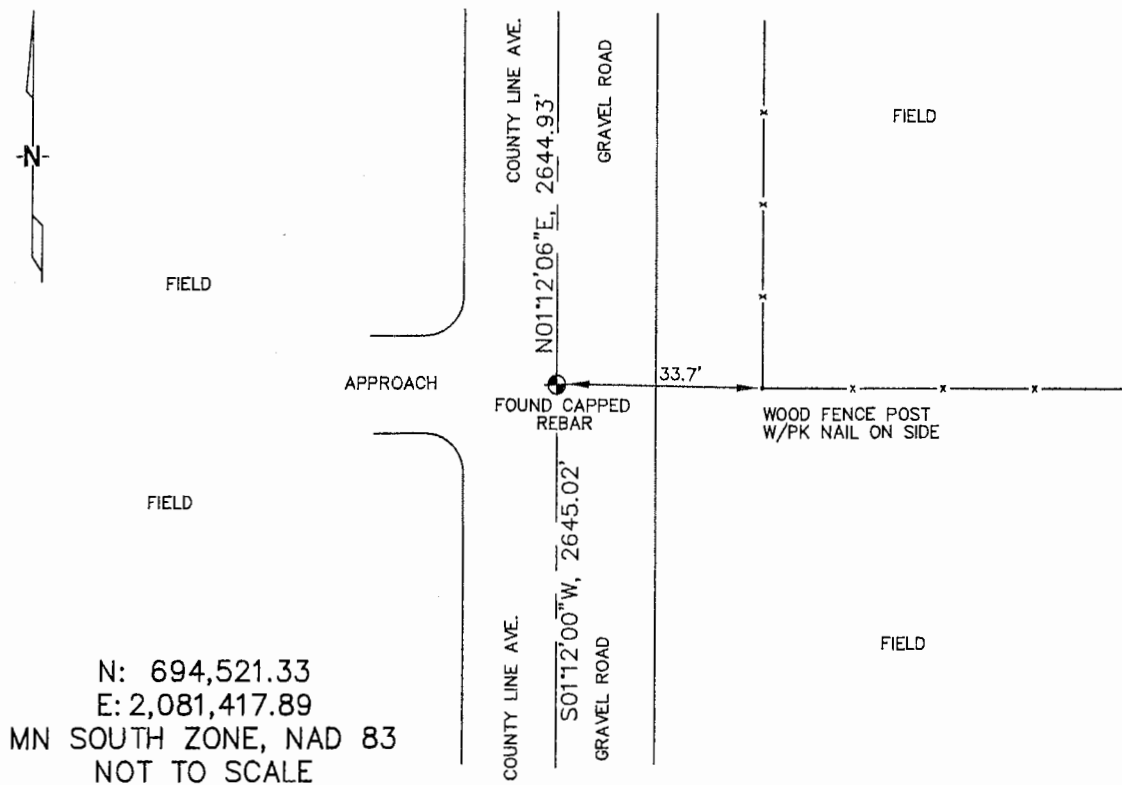
WEST 1/4 Corner of Section 18, Township 106N, Range 43W, 5TH P.M.

STATE OF MINNESOTA, County of MURRAY

At the corner location shown on the sketch :

- On 3/22/2006 found A REBAR WITH AN UNREADABLE CAP, IN THE
C/L OF COUNTY LINE AVE, OPPOSITE A FENCE LINE RUNNING EAST.
- left monument as found, lowered monument, removed monument (explain)
- On _____ set _____

Sketch of reference ties



N: 694,521.33
E: 2,081,417.89
MN SOUTH ZONE, NAD 83
NOT TO SCALE

Statement of evidence relative to this corner location is on back page

I hereby certify that this document and the data contained herein was prepared by me or under my direct supervision.

Thomas V. Zeff 5/22/06
Thomas V. Zeff Date
Registration No. 44563

- Land Surveyor, Professional Engineer
- County Surveyor, County Engineer

OFFICE OF THE COUNTY RECORDER

County of _____

SEP 28 2006

I hereby certify that this document was filed in the Co. Recorders office at _____ .M. on the day of _____ A.D., 20

County Recorder James V. Johnson
By _____, Deputy

DOCUMENT NO. _____

STATEMENT OF EVIDENCE:

WEST 1/4 CORNER, SECTION 18, T. 106 N., R. 43 W.,
MURRAY COUNTY, MINNESOTA

- 1861 J.W. Myers, US. Deputy Surveyor, monumented west range line.
- 10/20/1901 Murray Co. placed a stone, 10"X14"X20", in grade, on the corner;
no ties.
- 3/22/2006 Ulteig Engineers, Inc., Survey Crew, Dennis Lavallie Party Chief,
found a rebar with an unreadable cap, in the C/L of the gravel
road, opposite a fence line running east.
Ties: E-33.7' to PK nail in wood fence post;
N-2644.93' to NW corner, Section 18;
S-2645.02' to SW corner, Section 18.